

WEST VIRGINIA

state  **parks**

BABCOCK STATE PARK



TABLE OF CONTENTS

WELCOME	3
PARK MAP	4
GUEST SERVICES	5
PHONE DIRECTORY	6
EMERGENCY NUMBERS	6
HOUSEKEEPING SERVICES	7
SAFETY	8
TRAVELER SAFETY TIPS	8
HOSPITAL PHONE NUMBER	9
STARTING A FIRE	9
RECREATION	10
PARK FACILITIES	11
ATTRACTIONS	12
RESTAURANTS	13
SHOPPING	17

WEST VIRGINIA

state  **parks**

BABCOCK STATE PARK

WELCOME TO BABCOCK STATE PARK

Thank you for choosing to stay with us at Babcock State Park. During your visit, you'll find that Babcock State Park offers the tranquility and peace of a natural setting. Whether you take a hike or cast a fishing line, you are sure to come close to nature. During the spring and early summer, you can see rhododendron in bloom. If you are here in the fall, the colorful foliage is breathtaking. Babcock is beautiful any time of the year. You can also step back in time with a tour of the iconic Glade Creek Grist Mill. Between Memorial Day weekend & Labor Day weekend, you can rent a paddle boat, row boat or canoe at our 19-acre Boley Lake.

To make your stay more enjoyable, we wish to offer some tips on how to use and enjoy your cabin. Please read the following pages, as it provides some helpful information for operating cabin equipment, park rules and nearby activities.

We hope the cabin meets your satisfaction. Our staff is committed to making your visit a pleasant experience. Should you need additional assistance, please feel free to contact a member of the state park staff and we will be glad to help.

We hope you enjoy your stay and come back to see us soon!



WEST VIRGINIA

state parks

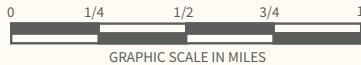
BABCOCK STATE PARK

1-833-WV-PARKS | WVstateparks.com | Facebook | Instagram | Twitter



Cabin Type	Capacity	Cabin Number
Legacy	2 person	3, 10, 17, 18
	3 person	2, 11, 12, 13
	4 person	1, 4, 5, 6, 7, 8, 9, 19
	6 person	16, 20
	4 person	21, 22, 23, 24, 25, 26, 27, 28
Economy Vacation	4 bedroom	14
	2 bedroom	15

Book cabins online at www.WVstateparks.com.



- Legend**
- Park boundary
 - Paved road
 - Improved road
 - Hiking trail
 - Unmaintained hiking trail
 - Stream
 - River
 - Parking area
 - Structures
 - Entering New River Gorge National Park & Preserve Boundary
 - Footbridge
 - Gate
 - Cabin area
 - Campground
 - Gift shop
 - Park headquarters
 - Parking
 - Picnic area
 - Picnic shelter
 - Point of interest
 - Restrooms
 - Scenic viewpoint/overlook
 - Showers

GUEST SERVICES

CHECK IN

Cabins: 4:00 p.m.

Campground: 1:00 p.m.

CHECK OUT

Cabins: 10:00 a.m.

Campground: 12:00 p.m.

COFFEE

Coffee maker and filters provided in all cabins

FIREWOOD

- Campground check-in station
- Park headquarters

LAUNDRY FACILITIES

Campground bathhouse

LOST AND FOUND

Park Office

MAIL SERVICE

Park Office (10:00 – 11:00 a.m. pickup)

UPS / FedEx (mid-late afternoon)

PET FRIENDLY CABINS

Pets only permitted in cabins 1, 2, 9, 12, 13, 14, 15, 17, 18, 24, 25, 26 and 27.

RECYCLING (ALUMINUM CANS)

- Boat dock
- Campground
- Park Office

TRASH PICKUP

Outside receptacles (Monday and Friday)

WI-FI SERVICE

CABINS

Password: babcocksp1937

PARK HEADQUARTERS

Password: AlmostHeaven

CAMPGROUND

No password needed

PHONE DIRECTORY

Thank you for choosing Babcock State Park. We stand ready to make your experience enjoyable and one you will never forget. Please call us if you have any questions or if there is anything we can do to make your time here more pleasant.

EMERGENCY

DIAL 911

PARK OFFICE

(304) 438-3004

SUPERINTENDENT

(304) 438-3018

ASSISTANT SUPERINTENDENT

(304) 438-3013



HOUSEKEEPING SERVICES

PARK OFFICE

(304) 438-3004

OFFICE HOURS

SPRING/FALL

Monday – Thursday: 8 a.m. – 5 p.m.

Friday: 8 a.m. – 6 p.m.

Saturday – Sunday: 10 a.m. – 6 p.m.

SUMMER

Monday – Friday: 8 a.m. – 6 p.m.

Saturday – Sunday: 10 a.m. – 6 p.m.

TOWEL EXCHANGE

- Towels/linens are not changed daily.
- If staying more than three nights, fresh towels will be delivered to your cabin. If staying a week, fresh towels will be delivered on the third and fifth days. If you need fresh linens, call the office before 3:30 p.m.

CHECKOUT PROCEDURE

- Please do not leave dirty dishes.
- Please bring key to office. If prior to office hours, leave key in drop box.

HELP US CONSERVE OUR NATURAL RESOURCES

Using towels more than once saves thousands of gallons of water each year. We are committed to doing our share to protect the environment. Thank you for helping us to conserve water and save the environment.

SAFETY

At Babcock State Park, we are committed to ensuring our guests are safe. If there is an emergency, dial 911. For non-emergency or security calls, dial (304) 438-3004.

TRAVELER SAFETY TIPS

1. If the fire alarm sounds, leave your cabin right away and close the door behind you.
2. If you must exit your cabin through smoke, stay low and move under the smoke.
3. Always keep your cabin key with you. Should you lose or misplace your key, please stop by the office.
4. Please do not open your cabin door without verifying the identity of the person knocking. If the person claims to be a park staff member, call the office at (304) 438-3004 to verify that a staff member was sent to your cabin and for what purpose.
5. Upon checking in, take a moment to locate the nearest exit to be used in case of an emergency.
6. If you are aware of or see any suspicious activity on park grounds, please notify a staff member immediately.
7. Acquaint yourself with the operation of the fire extinguisher, which is conveniently located in the kitchen area.
8. Please use the range for cooking only. Its electrical components are not designed for space heating.
9. Please discard ashes and trash separately in the provided containers. Mixing the two makes proper disposal difficult.
10. Please, do not use the toilets to dispose of heavy material, as it may clog the drainage system.
11. While the water reserve is sufficient to supply all normal cabin needs, occupants should avoid unnecessary waste.
12. Please report any items that need attention or repaired to the park office. In general, treat the cabin as though it was your own home, and together we can ensure that it will provide comfort and enjoyment for many years to come.
13. Open fires are only permitted in outdoor rings, if available. Do not leave outdoor fires unattended. Outdoor grills are for charcoal use only.

SAFETY

HOSPITAL

APPALACHIAN REGIONAL HOSPITAL

306 Stanaford Road, Beckley, WV
State Route 41 South to Beckley, WV
(304) 255-3000

MEDEXPRESS URGENT CARE

5447 Maple Lane, Fayetteville
U.S. Route 19 South to Fayetteville, WV
(304) 658-9397

PLATEAU MEDICAL CENTER

430 Main Street, Oak Hill, WV
U.S. Route 19 South to Oak Hill, WV
(304) 469-8600

RALEIGH GENERAL HOSPITAL

1710 Harper Road, Beckley
U.S. Route 19 South to Beckley, Harper Road Exit
(304) 256-4100

SUMMERSVILLE REGIONAL MEDICAL CENTER

400 Fairview Heights Road, Summersville, WV
U.S. Route 19 North to Summersville, WV
(304) 872-2891

STARTING A FIRE

The following are some tips that will make your fireplace experience much more enjoyable.

1. Use the fire starter provided. Starters can be broken down into pieces for multiple fires. Additional starters are available for purchase.
2. Follow instructions on firestarter using firewood provided.
3. Always keep the fire screen in front of the fireplace to prevent hot coals from popping out of the fireplace.

RECREATION

BIKING

Several trails can be used for biking, including the Wilderness Trail, Triple Creek Trail and Narrow Gauge Trail. See map for additional biking trails.

BOAT RENTAL

During summer months, paddle boat, row boat, and canoe rentals are available at the Boley Lake Marina.

BOAT DOCK HOURS:

Open from the Saturday before Memorial Day to Labor Day, 10:15 a.m. - 5:30 p.m.

FISHING

Fishing is permitted in Boley Lake and the Glade of Mann stream, both of which are stocked with trout in February, March, April and May. You may also catch largemouth bass, bluegill, or channel catfish in the lake. Please check current fishing regulations for restrictions and proper license information.

GRIST MILL

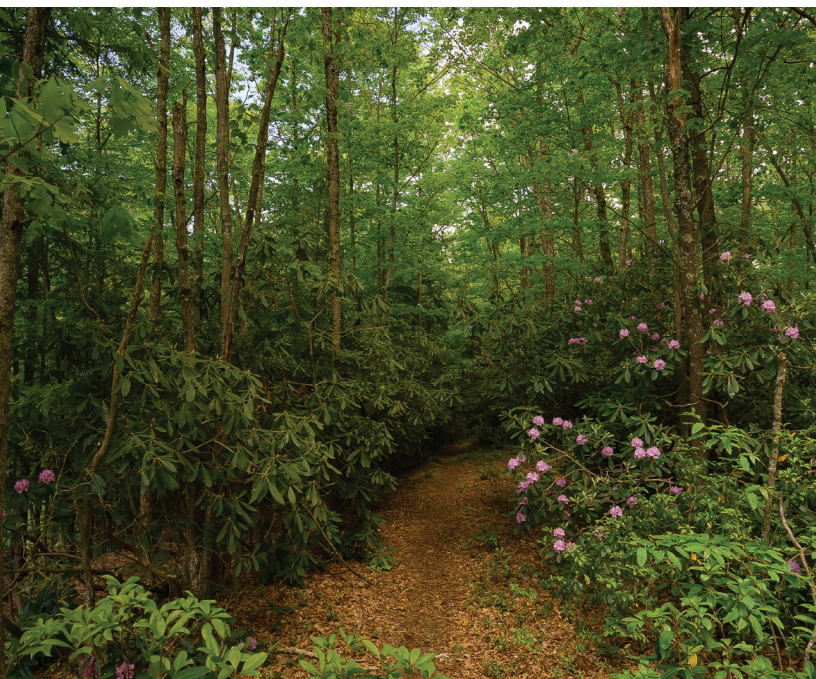
You can tour the Grist Mill and see it operate (water level permitting) at no charge.

GRIST MILL HOURS

- Spring and Fall:
Sat-Sun: 10 a.m. – 5:50 p.m.
(Closed noon – 1 p.m.)
- Memorial Day – Labor Day:
Daily: 10 a.m. – 5:50 p.m.
(Closed noon – 1 p.m.)

HIKING

Babcock has more than 30 miles of trails that give you the option to hike short or long distances at various difficulties, from easy loops to challenging climbs. Several trails showcase beautiful overlooks of the Glade Creek Gorge or Manns Creek Gorge. You may also like a stroll around the lake. Several trails are rocky and have high cliffs, so please be cautious. Stop by the Park Office to pick up a trail guide.



PARK FACILITIES

CABINS

Babcock State Park has 18 legacy cabins, eight economy cabins and two handicap-accessible vacation cabins. The only heat available in legacy cabins 1-13 is a fireplace. Cabins are open from the third Friday in April until late October. All have fully equipped kitchens and all linens and towels are provided. Pets are permitted in designated cabins at an additional charge.



CAMPING

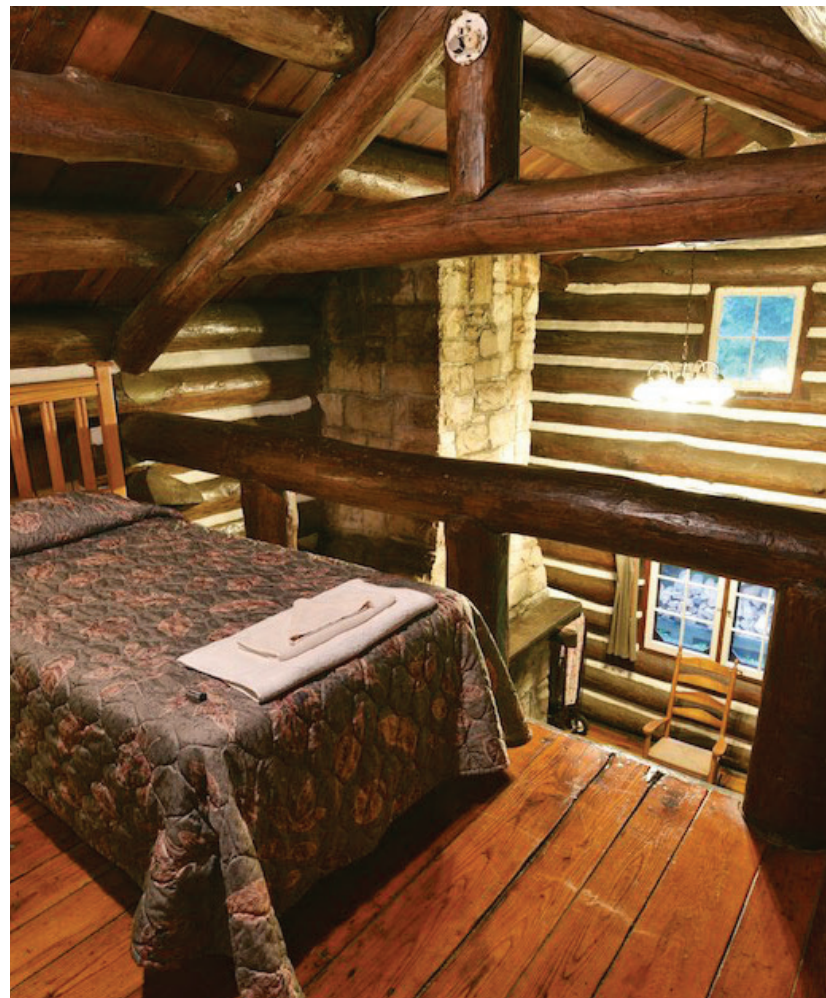
Babcock State Park's 52-unit campground has 24 nonelectric sites and 28 sites with electric hookups, four of which are ADA accessible. The campground accommodates tents or trailers and has a central bathhouse with coin-operated laundry machines, two water fill-up stations and two sewage dump stations. Firewood and ice are available for purchase. Wireless internet is available, and cellphone service is available from most major cellphone companies. Campsites are pet-friendly with restrictions. The campground is open from the third Friday in April until the fourth Monday in October, weather permitting.

GROUP CAMP (TENTS ONLY)

A group camp is available that accommodates up to 50 people in up to 20 tents. The site comes with electricity and a shelter with tables and a fireplace. The group camp is open from the third Friday in April until the fourth Monday in October.

SHOPPING

A Gift Shop is located at the park office. You can purchase from an assortment of souvenirs; whether they be West Virginia themed, items with the iconic Grist Mill, or stone-ground corn meal ground fresh at the mill, we are sure you will find something to take home. Check with the park office for gift shop hours.



ATTRACTIONS

CARNIFEX FERRY BATTLEFIELD STATE PARK

1194 Carnifex Ferry Road, Summersville
(304) 872-0825

HAWKS NEST STATE PARK

49 Hawks Nest Road, Ansted
(304) 658-5212

MEADOW BRIDGE DRIVE-IN

17974 State Route 20, Meadow Bridge
(304) 484-7878

MARQUEE CINEMAS

300 Merchants Walk, Summersville
(304) 872-2470

MARQUEE CINEMAS

200 Galleria Plaza, Beckley
(304) 252-5565

NEW RIVER GORGE NATIONAL PARK

New River Gorge Bridge (Canyon Rim)
162 Visitor Center Road, Lansing
(304) 574-2115

SUMMERSVILLE LAKE

2981 Summersville Lake Road, Summersville
(304) 872-3412



RESTAURANTS

FAYETTEVILLE AREA

(U.S. Route 19 South off U.S. Route 60 West, approximately 17 miles)

ARBY'S

570 Town Center
(304) 574-4644

BOB EVANS

100 Fayette Town Center
(304) 574-1489

CATHEDRAL CAFÉ

134 South Court Street
(304) 574-0202

CHETTY'S PUB

Canyon Rim Campus Road, Lansing
(304) 318-7905

DAIRY QUEEN

102 Elliotts Way
(304) 574-2482

FIRECREEK BBQ & STEAKS

310 Keller Avenue off U.S. Route 19
(304) 900-5505

GINO'S PIZZA & SPAGHETTI

86 Fayette Town Center Road
(304) 574-2604

KENTUCKY FRIED CHICKEN

122 Whitewater Avenue
(304) 574-2419

LONG JOHN SILVER'S

174 Whitewater Avenue
(304) 574-2323

MCDONALD'S

400 Fayette Town Center Road
(304) 574-4734

PIES & PINTS PIZZERIA

219 W Maple Avenue
(304) 574-2200

SMOKEY'S STEAK HOUSE

1 Ames Heights Road
(304) 574-4905

THE STACHE

117 Court Street
(681) 422-2606

SUBWAY

(inside Little General) off U.S. Route 19
(304) 574-3359

TACO BELL

154 Whitewater Avenue
(304) 574-2055

TUDOR'S BISCUIT WORLD

323 North Court Street
(304) 574-3820

WENDY'S

46 Fayette Town Center
(304) 574-2913

WHITewater BAR & GRILL

Quality Inn – U.S. Route 19
(304) 574-0789

RESTAURANTS

ANSTED

(U.S. Route 60 West, approximately 18 miles)

GINO'S PIZZA & TUDOR'S BISCUIT WORLD

126 West Main Street

(304) 658-5234

THE OVERLOOK RESTAURANT

Hawks Nest State Park on U.S. Route 60

(304) 658-5212

SUBWAY

123 Main Street (inside Shell Station)

(304) 658-9106

HICO

(U.S. Route 60 West, approximately 14 miles)

NEW RIVER EXXON AND DELI

75 Jack Smith Road

(304) 658-5561

LOOKOUT

(State Route 60 West, approximately 4 miles)

PARMAR SUNOCO PIZZA AND SANDWICHES

(304) 574-2540

MEADOW BRIDGE

(State Route 41 South to State Route 31 South to
State Route 20 East, approximately 14 miles)

MEADOW BRIDGE DRIVE INN & PIZZA

State Route 20

(304) 484-7878

OAK HILL

(U.S. Route 19 South, approximately 22 miles)

BURGER KING

603 Fayette Square

(304) 465-1060

MCDONALD'S

1552 East Main Street

(304) 469-3833

OK CHINESE RESTAURANT

637 Fayette Square

(304) 465-8465

PIZZA HUT

109 Packwood Drive

(304) 465-0581

RIO GRANDE

9004 Fayette Landing

(304) 465-5434

LITTLE CAESAR'S

937 East Main Street

(304) 469-3900

WENDY'S

200 Main Street

(304) 465-8659

RESTAURANTS

SUMMERSVILLE

(U.S. Route 19 North, approximately 30 miles)

APPLEBEE'S

302 Merchant's Walk
(304) 872-8800

ARBY'S

302 Merchants Walk (inside BP Gas Station)
(304) 883-2078

BOB EVANS

110 Merchant's Walk
(304) 872-8168

DAIRY QUEEN

U.S. Route 19 Broad Street
(304) 872-4641

FRAN'S FAMILY RESTAURANT

607 Main Street
(304) 872-6184

GINO'S PIZZA & TUDOR'S BISCUIT WORLD

5329 Webster Road
(304) 872-9779

HARDEE'S

1401 Webster Road
(304) 872-5749

KENTUCKY FRIED CHICKEN

805 Northside Drive
(304) 872-6905

LA CARRETA

205 Merchant's Walk
(304) 872-6570

LITTLE CAESAR'S

864 Broad Street
(304) 872-5333

LONG JOHN SILVER'S

813 Northside Drive
(304) 872-5157

MALONEY'S LLC

603 Church Street
(304) 872-8200

MCDONALD'S

U.S. Route 19
(304) 872-2883

PIZZA HUT

809 Broad Street
(304) 872-5449

SHONEY'S

901 Industrial Drive
(304) 872-6785

SUBWAY

221 Merchant's Walk
(304) 872-5506

TACO BELL

902 Industrial Drive
(304) 872-5757

WENDY'S

811 Northside Drive
(304) 872-7134

RESTAURANTS

RAINELLE

(U.S. Route 60 East, approximately 15 miles)

MCDONALD'S

504 Park Center

(304) 438-8533

DAIRY QUEEN

203 Kanawha Avenue

(304) 438-6211

PIZZA HUT (CARRY OUT ONLY)

532 Joh Raine Drive

(304) 438-8566

There are also many restaurants in the Beckley area (U.S. Route 19 South), approximately 32 miles southwest of the park. Office staff will be happy to assist.



SHOPPING

DOLLAR GENERAL

17532 Stanaford Road

Danese, WV 25831

(304) 438-6518

KROGER

518 Park Center

Rainelle, WV 25962

(304) 438-8951

PIGGLY WIGGLY

U.S. Route 60

Hico, WV

8 a.m. – 9 p.m. daily

(304) 658-5872



THANK YOU FOR VISITING

WEST VIRGINIA

state  **parks**

BABCOCK STATE PARK